



Mortality and Cost Study Analysis

A US based cost study analysis assessing the mortality, costs, and hospitalization rates for NIV intervention.

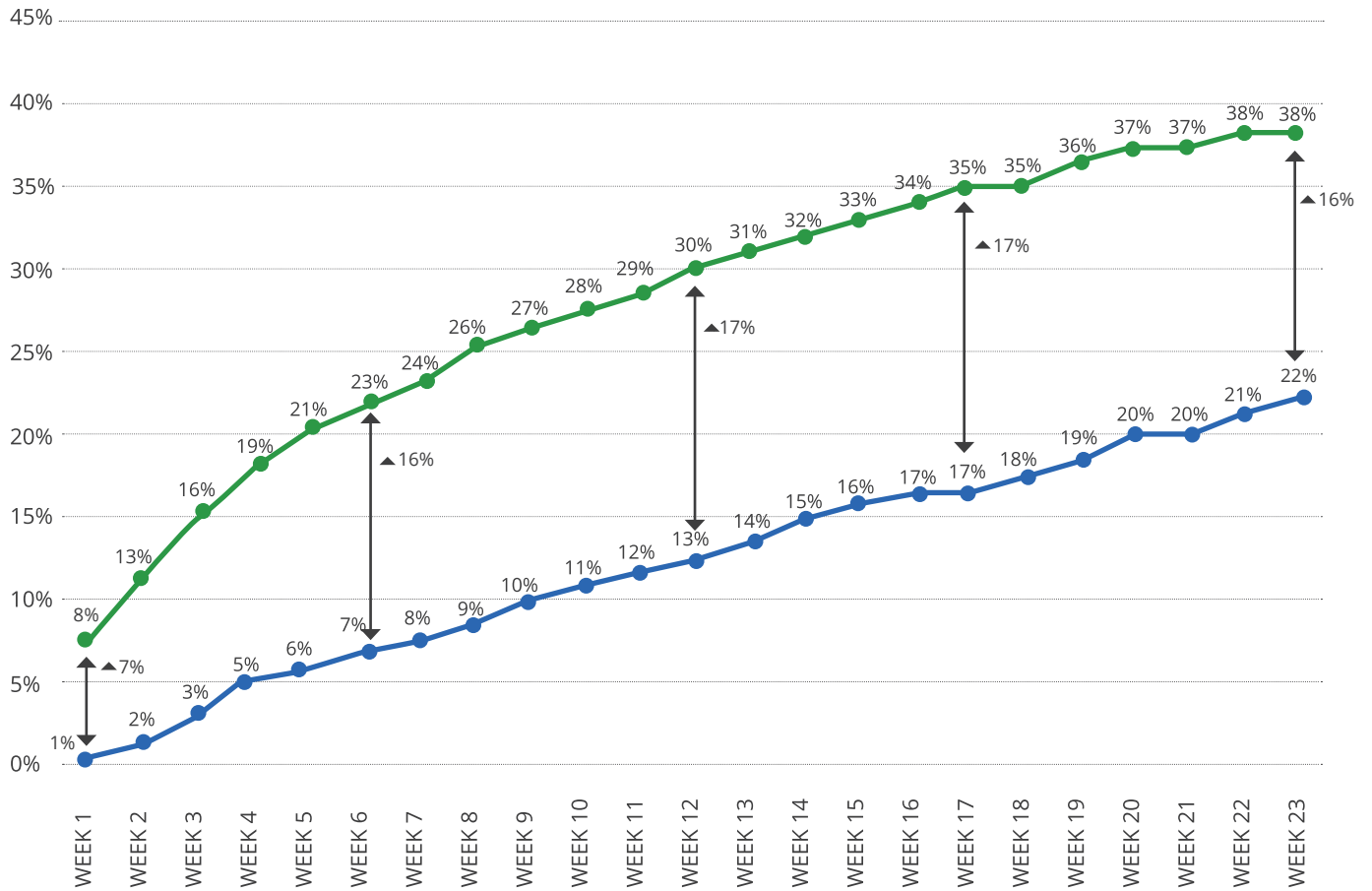
July 27, 2018

COHORT SIZES

GROUPS (national)	SAMPLE SIZE (n)	COHORT DESCRIPTION
UNTREATED	14,230	<ul style="list-style-type: none"> • Patients with COPD & CRF • Adjusted for disease severity by controlling for 6-months pre-intervention spend compared to the COMBINED group • 92% were initially diagnosed while hospitalized and all were alive at hospital discharge
VieMed	112	<ul style="list-style-type: none"> • Patients with COPD & CRF • Started on NIV treatment with VieMed
Other Vent Suppliers	1,266	<ul style="list-style-type: none"> • Patients with COPD & CRF • Started on NIV treatment with other vent suppliers
Combined	1,378	<ul style="list-style-type: none"> • Patients with COPD & CRF • Started on NIV treatment with VieMed and other vent suppliers
RAD	89	<ul style="list-style-type: none"> • Patients with COPD & CRF • Did not have Obstructive Sleep Apnea (OSA) and started on Respiratory Assist Devices (RAD) treatment

MORTALITY RATES

RESULTS



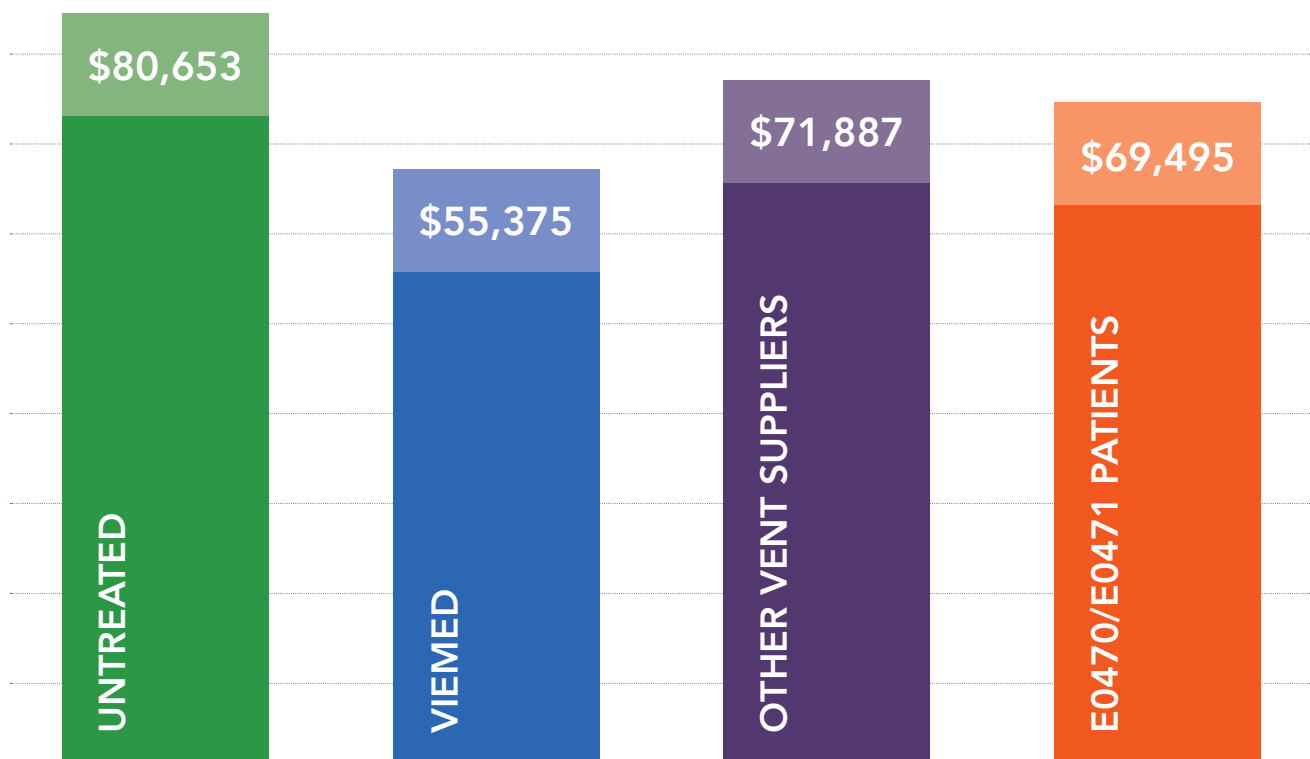
- TREATED WITH NIV
- UNTREATED

*All data was taken from Medicare claims from 2013-2016

TOTAL COSTS

GROUPS	6 MONTHS PRE	6 MONTHS POST	CHANGE (PRE TO POST)	TOTAL 1 YEAR
UNTREATED (14,230)	\$40,151	\$40,502	+1%	\$80,653
VIEMED (112)	\$25,995	\$29,380	+13%	\$55,375
OTHER VENT SUPPLIERS (1,266)	\$34,338	\$37,549	+9%	\$71,887
RAD (89)	\$30,665	\$38,830	+27%	\$69,495

TOTAL 1 YEAR COSTS

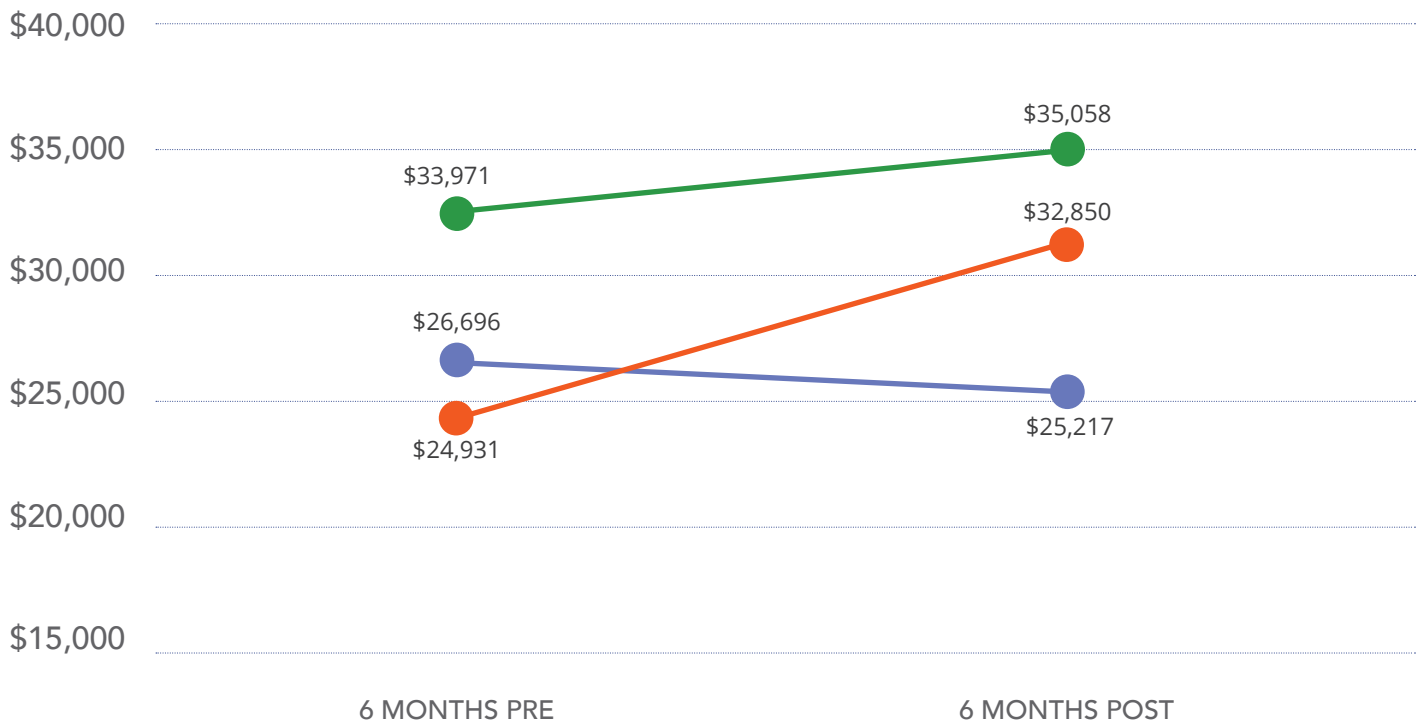


INPATIENT SPENDING

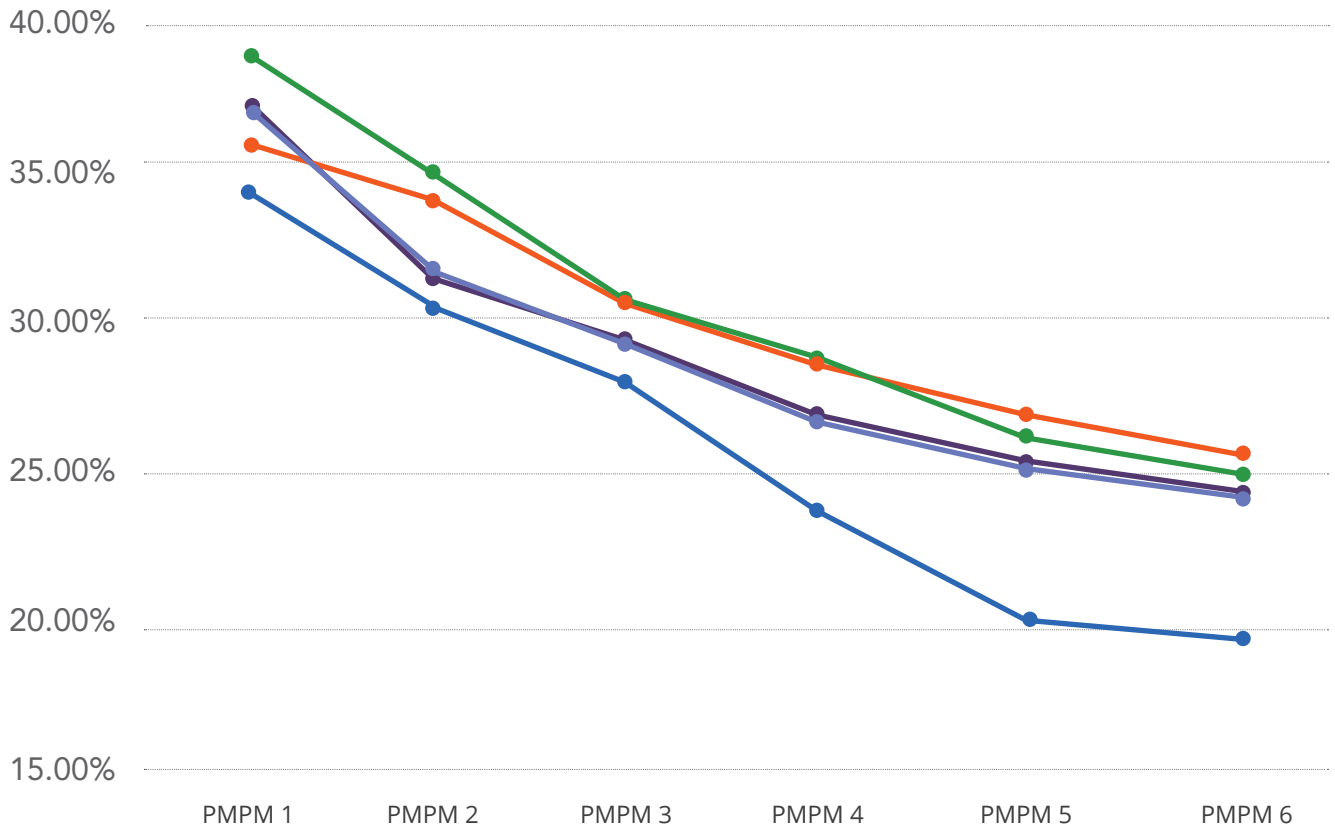
GROUPS	CHANGE (PRE TO POST)
UNTREATED (14,230)	+\$1,087 (3%)
COMBINED (1,378)	-\$1,479 (-6%)
RAD (89)	+32%

- UNTREATED
- COMBINED (VIEMED & OTHER VENT SUPPLIERS)
- E0470/E0471 PATIENTS - RAD DEVICE

PART A



HOSPITALIZATION RATES



- UNTREATED
- COMBINED (VIEMED & OTHER VENT SUPPLIERS)
- E0470/E0471 PATIENTS - RAD DEVICE
- VIEMED
- OTHER VENT SUPPLIERS

KEY FINDINGS

Patients who receive NIV treatments reduces mortality by 42% after 6 months of use. The reduction is rapid and persistent. All the benefit shows up by six weeks and persists through 23 weeks.

The untreated population has the highest mortality rate among all the peer groups.

In the one-year episode, VieMed patients have the lowest total cost compared to all other patient groups.

Patients who receive RAD treatments are more expensive than patients who receive NIV treatments due to increased inpatient spending.

Some or all of the services described herein may not be permissible for KPMG audit clients and their affiliates.



kpmg.com/socialmedia

The information contained herein is of a general nature and is not intended to address the circumstances of any particular individual or entity. Although we endeavor to provide accurate and timely information, there can be no guarantee that such information is accurate as of the date it is received or that it will continue to be accurate in the future. No one should act on such information without appropriate professional advice after a thorough examination of the particular situation.

© 2017 KPMG LLP, a Delaware limited liability partnership and the U.S. member firm of the KPMG network of independent member firms affiliated with KPMG International Cooperative (“KPMG International”), a Swiss entity. All rights reserved.

The KPMG name and logo are registered trademarks or trademarks of KPMG International.